

Ophthalmic Prescreening: For the complete vision screening needs preschool through adult. Ideal for School, Athletic Physicals, Employment Physicals, F.A.A. and General Check-Ups



Slide #1 (2000-147)
Demonstration Highway



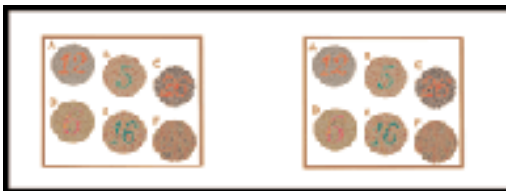
Slide #7 (2000-024)
FAR Point Stereo Depth Perception
(400-20 Seconds of Arc)



Slide #2 (2000-003)
FAR Point Acuity Right Eye & Left Eye
Monocular & both eyes simultaneously (20/200-20/20)



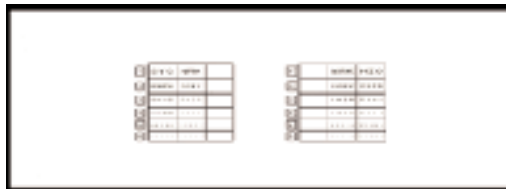
Slide #8 (2000-087)
FAR Point Fusion



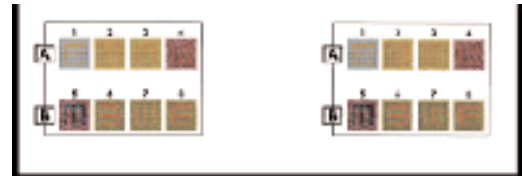
Slide #3 (2000-003)
FAR Point Color Preception
(Pseudo Ishihara)



Slide #9 (2000-004) Far point acuity & Left Eye Monocular Test, also right eye & left plus lens test (20/200-20/20)



Slide #4 (2000-007)
Near Point Acuity Right Eye & Left Eye
Monocular and both eyes simultaneously



Slide #10 (2000-019)
FAR Point Color Perception
(Tumbling "E")



Slide #5 (2000-012)
FAR Point Lateral Phoria
(1 Diopter Increments)



Slide #11 (2000-020)
FAR Point Muscle Balance
(Combination Lateral & Vertical)



Slide #6 (2000-025)
FAR Point Vertical Phoria
(1/2 Diopter Increments)



Slide #12 (2000-046)
FAR Point Acuity Allen Test
Binocular (20/100) & Monocular
(20/50-20/30)